

# **GIVE THE CHILDREN OF MPONGWE A FUTURE (GCMF)**

(REGISTERED IN ZAMBIA AS A SOCIETY – NUMBER ORS/102/96/12)



## **ANNUAL REPORT 2011**

# 1 TABLE OF CONTENTS

1	TABLE OF CONTENTS .....	2
2	FOREWORD .....	5
3	LOCATION OF GCMF .....	6
3.1	Geographical .....	6
3.2	facts .....	6
3.3	governance and traditional leadership .....	7
3.3.1	general district administration .....	7
3.3.2	traditional leadership.....	8
4	ORGANIZATION OF THE FOUNDATION .....	9
4.1	ZAMBIA.....	9
4.2	THE NETHERLANDS .....	9
4.3	The Executive Committee in Mpongwe .....	10
4.4	The Foundation Board in The Netherlands.....	13
4.5	Intermediate Volunteers .....	15
5	GOALS AND MAIN OBJECTIVES OF GCMF .....	16
5.1	constitution .....	16
5.2	Four main objectives of GCMF .....	16
5.3	Concretization of the above stated objectives in 2011 and the achieved results. ....	16
5.3.1	Advancing of education, health care and economical development in the Mpongwe district. In particularly for the vulnerable children, youth and women.....	16
5.3.2	Sustainable development, poverty reduction and creation of developing opportunities by means of a broad, interdisciplinary approach of the problems.....	17
5.3.3	To accomplish meetings between North and South. ....	18
5.3.4	Connecting with the Millennium Development Goals. ....	19
6	STRATEGIES AND POLICY 2011.....	21
6.1	Cooperation and demand driven approach in Mpongwe.....	21
6.1.1	GCMF Executive Committee:.....	21
6.1.2	The DDCC:.....	21
6.1.3	The people, committees and community.....	21
6.2	Partnerships in the Netherlands .....	22
6.2.1	Hogeschool Zuyd.....	22
6.2.2	Mov-groups, Parishes and vastenactie .....	22
6.2.3	Landstede .....	22
6.2.4	Dare2Go (Previous Jongeren en Missie) .....	23
6.2.5	Wilde Ganzen, NCDO and Cordaid .....	23

7	ANNUAL REVIEW 2011 .....	24
7.1	Overview .....	24
7.2	Basic education, higher education and The Orphans and Vulnerable Children program (OVC-program).....	<b>Error! Bookmark not defined.</b>
7.3	Support towards Twikatane community support group Nampamba ...	<b>Error! Bookmark not defined.</b>
7.4	IBALA: Our Natural Farming project in Mpongwe.....	<b>Error! Bookmark not defined.</b>
7.5	Construction of a Skills Training Centre / Community Hall for The Nchembwe Twesheko Women's Development Association. ....	<b>Error! Bookmark not defined.</b>
7.6	The furnishing of the Tubombeshe Skills Training centre of the Ibenga area Gender Association. ....	<b>Error! Bookmark not defined.</b>
7.7	Wrapping up the construction and furnishing of the Guesthouse and Internet café as an Income Generating project. Investing, upgrading and maintenance as a continuing proces. ....	<b>Error! Bookmark not defined.</b>
7.8	Switti village and The Mukuyu Women Orphan Support Group. ....	<b>Error! Bookmark not defined.</b>
7.9	Construction and start-up of a Poultry House for the Youth Group 'Youth in Progress' in the Mpongwe Center.....	<b>Error! Bookmark not defined.</b>
7.10	Volunteering, internships and research projects .....	<b>Error! Bookmark not defined.</b>
8	START-UP A TECHNICAL SCHOOL (GEORGE KORSTEN VOCATIONAL TRAINING CENTRE) IN MPONGWE .....	36
8.1	Preparations.....	36
8.1.1	Situation .....	36
8.1.2	location.....	36
8.1.3	plans .....	37
8.2	materials.....	37
8.3	Purchasing of a Truck.....	37
8.4	construction .....	38
8.5	community involvement.....	39
8.6	people management.....	39
8.7	capacity building and Youth involvement.....	39
8.8	durability .....	40
8.9	Financially.....	41
9	TRANSPARANCY AND ACCOUNTABILITY OF THE FOUNDATION IN MPONGWE.....	43
9.1	Two assignments were designed to address the above stated .....	43
9.1.1	Auditing the existing administrative structure and implementing changes when necessary and requested. ....	43
9.1.2	The determination of critical success factors to measure the value GCMF adds to the district.....	43
10	RISK MANAGEMENT AND THE PROJECT CYCLE .....	44

10.1	Financial risks .....	44
10.2	Excluding fraud / Guarding reputation .....	44
10.3	Project cycle .....	45
11	FUTURE.....	46
12	WITH THANKS TO .....	48

## 2 FOREWORD

The Foundation "Give the Children of Mpongwe a Future " is pleased to present the Annual Report 2011. The year 2011 was mainly marked by the completion of several projects including the construction of the training center of the women of Nchembwe Twesheko, the construction of a new kitchen and restaurant for the guesthouse and the support of the Community Group Twikatana Nampamba.

There was also the start of some major new projects which was the building of the Vocational Training Center and the start of the IBALA Natural Farming Project.

The two Belgian volunteers Tine Buysens and Tijs Naert continued working with energy and enthusiasm in Mpongwe, assisted in the second half of the year by Jordi Hol and Leonie Bilt Rice. Jordi assisted Tijs with the construction plans for the VTC, organized the material and organised the labour.

For the purpose of this construction GCMF purchased its own truck in 2011 which has already more than proven its services, and substantial transport cost has been saved. In due time the truck will be sold again.

An enthusiastic group of friends of Tijs Tine conceived the plan to organize a construction camp in Mpongwe: around Christmas a 25 Belgians arrived. The group worked for 3 weeks with the Zambian construction teams: this led to great knowledge to both sides!

There are also ongoing projects such as the Orphans and Vulnerable Children Project, the daily operation of the Guesthouse and Internet Cafe with the regular maintenance and replacement of resources, the exploitation of the double cab 2WD car with bucket, the interns and the visits of several people.

Last in this preface, we want to dwell on the death on May 13, 2011 of our advisor , board member, and spouse of the President of the Foundation GKMT, Mr George Korsten.

George was a strong supporter of the idea to construct the Vocational Training Center. Unfortunately, he will not see the construction and completion of this project The foundation GCMF (Give the Children of Mpongwe a Future) in Zambia is very grateful for his contribution over the past 10 years and will honor it with the naming of the Vocational Training Center under construction: Vocational Training Center George Korsten.

A.B. KALIMA / Chairperson

For and on behalf of GCMF Mpongwe.

## 3 LOCATION OF GCMF

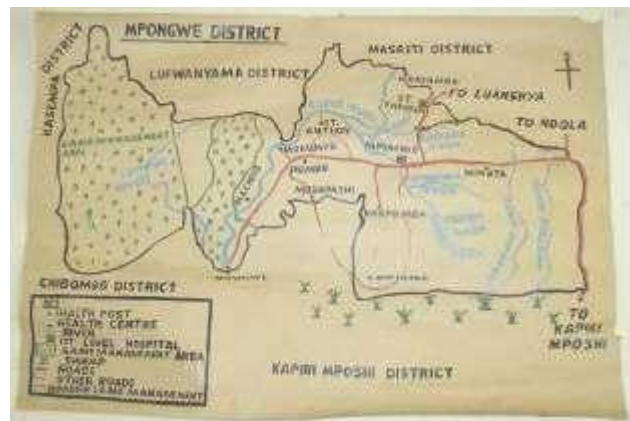
### 3.1 GEOGRAPHICAL

Mpongwe District is formerly part of Ndola Rural District on the Copperbelt. It lies at about 67 km to the South of the mining town of Luanshya. The area is found within the central plateau of Zambia lying between 1200 metres and 1500 meters above seal level. It has generally flat undulating relief with low-lying hills. The District shares boundaries with other neighbours. To the South, it shares boundary with Central Province, and to the West with Kasempa and Lufwanyama.

The region is well served with transport network. The Luanshya-Mpongwe road that runs North-South is tarred and in good condition. There is also the newly tarred road that runs East-West from the Ndola – Kapiri Mposhi highway. This road almost cuts through the middle of the entire district up to Machiya on the Kafue river.

### 3.2 FACTS

FOUNDATION	1997, apart from Masaiti District
SURFACE	Ongeveer 8 000 km <sup>2</sup>
POPULATION	approximately 90 000 inhabitants
GROWTH	5,8 % a year, due to migration
FARMING	Main source of income (especially maïs)
OTHER	beekeeping, fishing and production of charcoal. Not many people employed by government.
HOUSEHOLDS	Many households are managed by women and children.
EVOLUTIE HANDEL	Coming up
TOURISM	Lake Kashiba, Lake Nampamba, Natural Forest, Kafue Lodge



### 3.3 GOVERNANCE AND TRADITIONAL LEADERSHIP

#### 3.3.1 GENERAL DISTRICT ADMINISTRATION

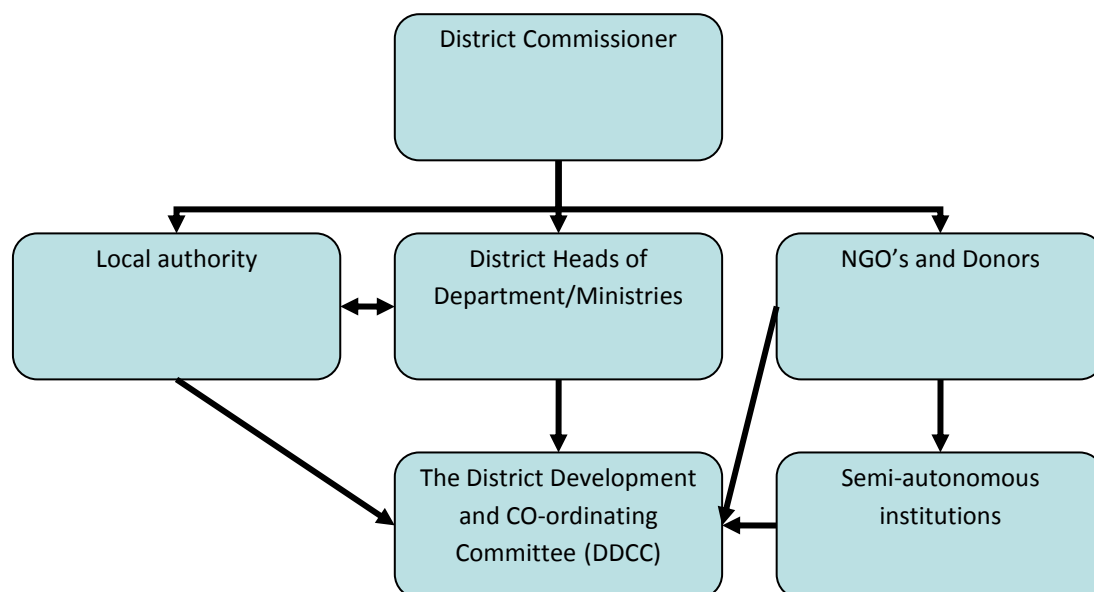
##### 3.3.1.1 District Administration composition

The head of the district administration in Mpongwe District is the District Commissioner who is overall supervisor of all activities in the District. The District Commissioner is head of government at District level and reports to the Provincial Permanent Secretary.

The organization of the Government Administration at District level involves the following:

- The District Commissioners Office
- The Council
- Government Line Departments
- Semi autonomous Institutions
- Local Authority
- NGO's, Cooperating Partners and Community based – Organisations
- District Development Co-ordinating Committee (DDCC)

The organization of the District Administration is summarized in the following table below:





### 3.3.1.2 the District Development Co-ordinating Committee (DDCC)

The DDCC is one of the important organs of the District which is responsible for planning and co-ordinating of development programs. Among its functions, the DDCC provides a forum for dialogue and co-ordination on development issues in the District. It prepares District Development Plans and Progress reports on the implementation of the Projects and Programs for consideration by the Provincial Development co-ordinating Committee (PDCC).

### 3.3.2 TRADITIONAL LEADERSHIP

Chiefs in the District:

NAME OF CHIEF	RESIDENCE
Senior chief Ndubeni	Kantatamwe
Chief Kalunkumya	Kanyenda
Chief Lesa	Mpongwe Central
Chief Malembeka	Ibenga
Chief Machiya	Across Kafue River
Chief Mwinuna	Near Chisanga Primary School





## 4 ORGANIZATION OF THE FOUNDATION

### 4.1 ZAMBIA

The Foundation “**Give The Children of Mpongwe a Future**” is a registered Non-Governmental Organization (Registration Number ORS / 102/96/12).

It was founded by the current Chairperson in the Netherlands Mrs. Ton Korsten-Korenromp and started as a community based organization under the Mpongwe Baptist Mission. When demand for project activities grew and new ideas came in 2005, it was time to expand the horizon of activities. New members were co-opted into the executive committee.

The Foundation “Give the children of Mpongwe a future” in Mpongwe consists of a committee of 11 members. Five people are assigned to run the daily affairs. The members are representatives from the District HIV-AIDS task force, Mpongwe Baptist Association, Chiefteness Lesa, Health Office, Education Office, Agriculture office, District Planning Unit, Community Development and other community members.

- Registration: The Foundation was registered in the Registrar of Societies of Zambia in November 2005 under the name “Give the children of Mpongwe a Future”. The registration number is ORS/102/96/12.
- Address:  
P.O BOX 14  
Plot 5, 6 and 12  
Machya road  
Mpongwe  
ZAMBIA
- Bank details:  
Standard Chartered Bank  
Luanshya Branch  
Account number 01 504 362 703 00

### 4.2 THE NETHERLANDS

The Foundation “Geef de kinderen van Mpongwe een toekomst” consists out of a board and advice committee, plus extra volunteers come in for specific actions or projects.

- Registration: Kamer van Koophandel: number 1407468 as an NMBI (Algemeen nut beoogende instelling) under the name “Geef de kinderen van Mpongwe een toekomst”.
- Address:  
Dorpstraat 16  
6454 AG, Jabeek

- Bank details:  
ING 9433564 t.n.v. Stichting Mpongwe, Jabeek

### 4.3 THE EXECUTIVE COMMITTEE IN MPONGWE

The executing of the projects in Zambia is in the hands of this committee.  
The committee holds 11 persons.

Representatives from the District HIV-AIDS task force, Mpongwe Baptist Association, Chiefteness Lesa, Health Office, Education Office, District Planning Unit, Community Development and other community members. All members are Zambians and only receive allowance when visiting and monitoring the projects for more than 3hrs.

In 2011, Mrs. Rose Munkombwe was co-opted in the executive committee as representative of the Ministry of Health. A representative of the Ministry of Agriculture, Stephen Nkangwa, was co-opted in the executive and the steering committee. Also Patrice Mutakela was co-opted in the steering committee. By doing so, the foundation wanted to empower the Steering Committee in order to deal with the different running projects.

In 2011, the members of the steering committee received talk time monthly, and when students are coming for an internship within Mpongwe, the supervisor within the steering committee received a supervising allowance.

The current designation is as follows:

#### CHAIRPERSON



#### VICE CHAIRPERSON

Mr. Anthony Kalima,

- Head Britonester Private School,
- retired,
- previously principle of Mpongwe Basic School,
- Caritas contact person for Mpongwe district and is asked upon for advice by several Mpongwe committees.
- He attended a communication training in Lusaka in April at the expense of the Foundation.

Mrs. Fridah Musukuma,

- Planner Mpongwe District Council.
- Attended the course of Project management for 2 years at the expense of the foundation.



SECRETARY



STEERING COMMITTEE MEMBERS

EXECUTIVE COMMITTEE MEMBERS

Mr. Maxwell Bweupe

- Former member District AIDS Task Force.
- Current coordinator STEPS OVC for Catholic Relief Services.
- He got his masters degree in Public Health at the university of Maastricht in July 2010.

Mrs Elizabeth Lusambo

- Businesswoman,
- contactperson NGOCC (Non-governmental Organization Coordinating Committee) for Mpongwe District.
- Program Coordinator Nchembwe Twesheko Women's Group.

Mr Patrice Mutakela,

- project coordinator Mpongwe Baptist Association,
- attended a communication training in Lusaka in April at the expense of the Foundation.
- He is now studying Accounts.

Mr Stephen Nkangwa

- Officer in charge of the Farmer Training Centre(FTC)
- diploma in food and nutrition
- diploma in -tropical agriculture (The Netherlands)

Mrs Justina Ngoma

- CDO (Community Development Officer),
- Social Worker,
- retired.

Mrs Robiness Mali

- advisor of the Chiefteness of Mpongwe.

Mr Julius Mutanuka

- district buildings officer, Ministry of Education.
- Followed courses concerning 'Building Construction' and

‘Business and Bookkeeping’.

Mr Vackson Mwenda

- former principle of Mponwe Basic School,
- presently principle St. Theresa Basic School in Ibenga.
- Chairman DATF (District Aid Task Force).

Mrs Rose Munkombwe

- Sister in charge Mpongwe Mission Hospital,
- presently working with the District Health Management Team Mpongwe

This executive Committee is the factual leader of The Foundation. It receives applications from the community, conducts field and desk appraisals, recommends viable projects to the board in The Netherlands, conducts the implementation of activities and is in charge of the monitoring of projects activities.

They also are in charge of the reports on projects for the DDCC, the foundation in the Netherlands and at request. They keep close contact to its mother organization in The Netherlands.

Out of this committee, five members have joined in the Steering Committee.

Assisted by two Belgian volunteers in Project Management and Financial Management , the Steering Committee is assigned to run the daily affairs and meets fortnightly .

FINANCIAL MANAGER

Mrs. Tine Buysens

- Studied social and political science at the University of Ghent, Belgium
- Worked as a marketing manager in Belgium

PROJECT MANAGER

Mr. Tijs Naert

- Studied African Languages and Cultures at the University of Ghent, Belgium
- Was project manager for RAFIKI, an Africa project in Congo, Rwanda and Burundi
- Was head of the International team of the Scout movement in Flanders
- Worked as team coordinator in a social organization in Belgium



## 4.4 THE FOUNDATION BOARD IN THE NETHERLANDS

The Foundation “Geef de kinderen van Mpongwe een toekomst” in The Netherlands consists of a daily board (Chairperson, Secretary and Treasurer). The board was elected for a period of 2 years. All current members are working voluntarily. They don’t receive contributions or allowances for their work.

The current occupation is as follows:

### CHAIRPERSON



### SECRETARY

Mrs Ton Korsten-Korenromp, Jabeek

- Founder Foundation
- Senior teacher at the faculty Health Care of Hogeschool Zuyd
- Regional coordinator YPO Zambia of Hogeschool Zuyd

Mr Wim Mensink, Heeten

- Head of financial administration at St. Rentray in Eefte
- was previous working in Rwanda (1985-1990) and Uganda (1999-2002).



TREASURER



MEMBER

ADVISOR



Mrs Liesbeth Toet,

- Lecturer Landstede
- Previous working for VSO in Zambia

Mr. Johnny Veldkamp

Employed by Department of Defense - as a technical employee GBS

Mr. George Korsten, Jabeek: in Memoriam

- Retired
- Previous member of the Board of directors of Hogeschool Sittard

With a lot of sadness and pain in the heart we announce that, Mr. George Korsten, advisor from the beginning of the foundation and husband to Mrs Ton Korsten-Korenromp passed away on the 13<sup>th</sup> of May 2011. Condolences are hereby given to Ton and his family. He will be greatly missed by the GCMF fraternity and all that knew him. The foundation GCMF in Zambia is very grateful for his contribution over the past 10 years and honor it with the naming of the Vocational Training Center under construction: George Korsten Vocational Training Center .

This Board, translated “Geef de Kinderen van Mpongwe een Toekomst”, is mainly in charge of resource mobilization. Its tasks consist out of Policy development, developing and monitoring the Foundations vision and mission on the one hand and project recommendation, monitoring and evaluation on the other hand for project commencement.



## 4.5 INTERMEDIATE VOLUNTEERS

The GCMF Foundation in Mpongwe is being assisted by two Belgian volunteers. Respectively Tine Buysens and Tijs Naert were strengthening the Foundation in 2011. In September 2011 they got assistance from two Dutch volunteers, Leonie Bilterijst and Jordi Hol.

### TASKS OF THE VOLUNTEERS

- To assist and advise the GCMF Organization in Financial (Budgeting, reporting, analyzing) and project management.
  - Supporting community groups in building up capacity within their group
  - Preparing business plans for “income generating activities”, in cooperation with several community groups
  - Preparing the yearly statements and writing the annual report;
  - Formulating advises and proposals for improvement in the areas of financial and project management;
  - Visiting projects in the district and guiding the foundation with realization monitoring and evaluation of its projects;
  - Preparing progress and project reports.
- To manage The Guesthouse and internet café of the foundation on a daily base, to select and train a counterpart.
- To start-up the construction of the Vocational Training Centre in Mpongwe District, the first in his kind.
- To guide HBO internships of Hogeschool Zuyd with their assignments in the district.
- To maintain communication with The Foundation in The Netherlands.



## 5 GOALS AND MAIN OBJECTIVES OF GCMF

### 5.1 CONSTITUTION

*The Foundation aims to assist the children of Mpongwe District, either directly or indirectly, to improve their environments and their lives by encouraging them to fulfill their potential, and make the most of the opportunities presented to them. (Taken from our constitution)*

Since the start-up The foundation has broaden his aims to support projects in health, education and economic development in the Mpongwe district, especially focusing on children, women and youth.

She hereby follows a broad approach in order to achieve 4 main objectives as stated below.

### 5.2 FOUR MAIN OBJECTIVES OF GCMF



1. Advancing of education, health care and economical development in the Mpongwe district. In particularly for orphans, vulnerable children, youth and women;
2. Sustainable development, poverty reduction and creation of development opportunities by means of a broad, interdisciplinary approach of the problems; In 2010 the foundation wanted to emphasis on stimulating 'income generating ventures' by organized community groups within Mpongwe District. In 2011 the foundation wants to continue on the same path.
3. To accomplish meetings between North and South;
4. Connecting with the Millennium Development Goals.

### 5.3 CONCRETIZATION OF THE ABOVE STATED OBJECTIVES IN 2011 AND THE ACHIEVED RESULTS.

#### 5.3.1 ADVANCING OF EDUCATION, HEALTH CARE AND ECONOMICAL DEVELOPMENT IN THE MPONGWE DISTRICT. IN PARTICULARLY FOR THE VULNERABLE CHILDREN, YOUTH AND WOMEN.

- Financing school for 100 orphans or vulnerable children up



to grade 12 (books, shoes, uniform, school and exam fees).  
*Result: Accomplished for 95 pupils.*

- Sponsoring of 5 students in higher education.  
*Result: Accomplished for 9 students.*

- Research on the possibility of constructing a Technical School in The Mpongwe district and the draft of start-up plus business plan.  
*Result: Accomplished.*

- Start the construction of a Vocational Training Centre in Mpongwe District  
*Result: realized*

Supporting the Start-up the poultry house of the youth group 'Youth In Progress' Mpongwe  
*Result: Realized.*

- The start of IBALA, the natural Farming project of the foundation whereby several community groups are involved.

Result: accomplished

### 5.3.2 SUSTAINABLE DEVELOPMENT, POVERTY REDUCTION AND CREATION OF DEVELOPING OPPORTUNITIES BY MEANS OF A BROAD, INTERDISCIPLINARY APPROACH OF THE PROBLEMS.

In 2011, GCMF changed his focus from building activities to supporting community based groups in becoming self-reliant. Hence different 'income generating ventures' were supported by the foundation. The foundation also wants to stimulate other community based groups to come up with these activities, in order to develop themselves and with them the community.



- Support the Youth Group 'Youth In Progress' to start up the rearing of chickens in their poultry. Guidance in financial and personal management and marketing.  
*Result: realized*



- Construction of a Skills Training Centre / Community Hall in Mpongwe for the Women's Group "Nchembwe Twesheko".  
*Result: accomplished*

- Capacity building of the Women at Switti Village. Set-up of Harvest program, community development work shops and official registration "Mukuyu Women Orphan Support Group".

*Result: Partially accomplished.*

Support Twikatane Community Support Group of Mwanga Village to become an official registered group.

*Result: accomplished*

- Construction of a restaurant at the GCMF Guesthouse as an income generating activity.

*Result: accomplished, expected to open the end of March*

- Cooperation with the District Developing Co-ordinating Committee in Mpongwe.

*Result: Realized.*

### 5.3.3 TO ACCOMPLISH MEETINGS BETWEEN NORTH AND SOUTH.



- Continuation of the research projects in cooperation with the faculties of the Hogeschool Zuyd in The Netherlands en The District Developing Co-operating Committee in Mpongwe.

*Result: Accomplished.*

- Continuation of research projects and internships with students from the Netherlands and Belgium, expanding to different schools and fields.

*Result: Continuous process.*

- Start-up of a long term relationship with Dare2Go in the Netherlands in order to accomplish exchange visits, internships and research projects.

*Result: Continuous process .*

- Organizing a

### 5.3.4 CONNECTING WITH THE MILLENNIUM DEVELOPMENT GOALS.

#### END POVERTY AND HUNGER



- The set-up of a Poultry House for the Youths of Youths in Progress and a Skills Training Centre for the Women of Nchembwe Twesheko. By establishing income generating projects, the Foundation is contributing to sustainable economical development.

#### UNIVERSAL PRIMARY EDUCATION



- The OVC program of GCMF is guaranteeing the education of at least 100 vulnerable children. Also by constructing and furnishing schools and teachers houses in remote rural areas and the start up of a Vocational Training Centre.

#### GENDER EQUALITY



- The support of the Women's Groups Nchembwe Twesheko, the Ibenga Area Gender Association and the Mukuyu Women stimulates Gender Equality and empowerment of women.

#### CHILD HEALTH



- The rural Health Centre of Kasamba was equipped with a radio station on solar energy, therefore establishing a better communication between the different health institutions throughout the district. The Youth group 'Youth In Progress' is supported by GCMF to do workshops at rural villages in Mpongwe whereby the children are educated on health through a creative program.

#### MATERNAL HEALTH

- In cooperation with Hogeschool Zuyd a student Biometrics is researching the possibilities and challenges of a prototype portable ultrasound device. This can help the diagnostics of





#### COMBAT DISEASES.



#### ENVIRONMENTAL SUSTAINABILITY



#### GLOBAL PARTNERSHIP



pregnant women living in remote rural areas.

- Prevention of diseases has been one of the most important goals of the water and sanitation project.
- To create a healthy live environment, inclusive clean drinking water and sanitary provisions. GCMF has repaired 13 water pumps and installed one last latrine at Chawama school.
- The Foundation is officially registered as an NGO in Zambia. She works close together with different Zambian and international organisations.





## **6 STRATEGIES AND POLICY 2011**

The Policy of The Foundation aims to contribute structurally towards sustainable development poverty reduction and creation of development opportunities for vulnerable groups in The Mpongwe District. Specifically Orphans, Youths and Women are hereby targeted.

With the creation of chances for development the Foundation aims to connect to advises given by the WWR report.

This policy is realized specifically by on the one hand financing the educational expenditures for children throughout their entire course of school and furthermore feasibility studies and preparations were made to start the first Vocational Training School in Mpongwe. This enabling Young people to continue education within the district.

On the other hand setting up or supporting “Income Generating Projects” for vulnerable community groups. The Foundation itself is also striving towards self-reliance. The income generating Guesthouse and Internet café is under constant upgrading and revising in order to reach full potential.

### **6.1 COOPERATION AND DEMAND DRIVEN APPROACH IN MPONGWE**

#### **6.1.1 GCMF EXECUTIVE COMMITTEE:**

The committee plays a key role in creating support and base for sustainable development, poverty reduction and creation of development opportunities for children, youths and women. The executive committee can be approached and translates approved demands into small scale development.

#### **6.1.2 THE DDCC:**

The committee works together with District Development Co-ordinating Committee in Mpongwe (DDCC). All the questions of the people are valued by the goals and problem areas from the DDCC reports. The committee reports 3-monthly to the DDCC about its running projects.

#### **6.1.3 THE PEOPLE, COMMITTEES AND COMMUNITY**

In order to be sustainable it is important that the population contributes and is taking up responsibilities. The cooperation of community groups is necessary to work demand driven. It is the same community that will eventually make the projects lasting. Everybody is welcome at the GCMF Offices and every application is taken into consideration. GCMF is presently supporting Tubombeshe Gender Association, Mukuyu Women Orphan Support Group, Youth in Progress and The Nchembwe Twesheko Womens group. For the OVC school support program GCMF works closely together with PTA and other school or community based committees.

## 6.2 PARTNERSHIPS IN THE NETHERLANDS

### 6.2.1 HOGESCHOOL ZUYD



The foundation “Geef de kinderen van Mpongwe een toekomst” en Young Professionals Overseas Zambia (YPO Zambia) of Zuyd (before) Hogeschool Zuyd accommodate students of different faculties of the University who want to participate in research projects affiliated to the creation of development opportunities, sustainable development and poverty reduction in the Mpongwe district.

Working demand driven is the starting point of working in a transdisciplinary setting in a different culture. Social relevant questions from the Mpongwe district are being translated into projects and research questions. This process allows students to acquire important competences but also to contribute to the creation of development chances, sustainable development and poverty reduction within the Mpongwe District.

### 6.2.2 MOV-GROUPS, PARISHES AND VASTENACTIE



In the Fasting projects 2011 (translate: Vastenactie) GKMT worked together with the MOV Group from Luttenberg and the parishes in Broekland, Raalte, Mariënheem, Heeten, Holten, Nieuw Heeten and Haarle. Also the Youth Group form 2009 is still active during this time. MOV members and youths provide actions during the Vastenactie. They also give lectures in schools and in the parishes. The money acquired from the Fasting Projects is being supplemented with 50% by Vastenactie/Cordaid. Every year the foundation GKMT submits an application for The “Own Means Project” (Translate: Eigen Doelen Project). After ending the project Cordaid receives a report on finances and content.

### 6.2.3 LANDSTEDE



The Youths of ROC Landstede in Raalte are still actively involved in the developments of Mpongwe. Together with the teachers of Landstede the group “Friends of Landstede-Mpongwe” was formed. In 2011 they held different actions to finance the construction of The Poultry Farm for the YIP Youth Group. In the future pupils of Landstede will come and do their internship in the projects of The

Foundation. The Foundation is acknowledged by Calibris as a valid internship place for MBO.

#### 6.2.4 DARE2Go (PREVIOUS JONGEREN EN MISSIE)



In 2010 a student Creative Therapy and one Social Studies did an internship in Mpongwe involving “Community Development”. The Foundation is planning to continue this partnership.

#### 6.2.5 WILDE GANZEN AND NCDO



Wilde Ganzen



Through own funding and supplemented by Wild Goose The Foundation was this year finally able to buy a vehicle (Isusu) for itself.

In 2010 The Foundation submitted an application with NCDO and Wild Goose for the construction of a Technical School in Mpongwe. This application was approved in November 2010.



Through own funding and supplemented by Cordaid The Foundation was able to start the IBALA project.



## 7 ANNUAL REVIEW 2011

### PROJECT ACTIVITIES: RESULTS AND EXPENDITURES

*\*Throughout this year report, we will use an average exchange rate of K 6700 / € 1*

*\* The mentioned expenditures exclude the contributions the projects make towards the Diesel, Maintenance, amortize etc. for Car Use.*

### 7.1 OVERVIEW

#### GCMF Accountlist Balance

Opening balance from 01 January 2011		<b>36.443.281,86</b>
<b>Income</b>		
<u>Donations</u>		
GKMT	489.833.658,00	
NCDO/Wilde Ganzen	328.451.500,00	
Cordaid	262.291.956,24	
Bank interest	762.116,23	
<u>CHQ depositits / revenues</u>		
YPOS	3.344.315,00	
GH	9.438.315,11	
YPP	12.919.000,00	
CAR	20.438.250	
SOL	14.440.000	
NCHE cdf	13.000.000	
Total income to 31 December 2011		<b>1.154.919.110,58</b>
Balance IN		1.191.362.392,44
<b>Expenditure</b>		
CAR Isuzu Maintenance, insurance and diesel	46.595.788	
CHI Hogeschool Zuyd - Selling Table clothes	30.000	
Guesthouse investments - general / dormitory / fence /		
GH restaurant	104.463.700	
GH cashing revenues	9.499.500	
HAD Hopes and Dreams - identity program	1.400.400	
IBA Ibala - Natural Farming	36.576.000	

NCHE	Nchembwe Twesheko Womens Group - Community Hall	63.858.000	
	<i>NCHE cashing revenues</i>	<i>13.000.000</i>	
OVC	Orphans and Vulnerable Children support program	93.116.950	
OVH	Overhead Costs	17.822.200	
SOL	Solar Aid - Sala of solar panels	15.790.000	
TUB	Tubumbeshe Gender Club	1.890.000	
VTC	Construction of Vocational Training Center - George Korsten	479.404.663	
YPOD	Young professionals overseas - Teachers	1.615.796	
YPOS	Young professionals overseas - Students	30.487.740	
	* Classroomblock in Chipese / Books at Kabumba		
YPP	Youth in Progress - Poultry House	20.839.900	
	<i>YPP cashing revenues</i>	<i>12.919.000</i>	
	<i>1500 Tax Application</i>	<i>447.349</i>	
Total expenditures as at 31 December 2011			<b>949.756.986,00</b>
Closing balance 1500 as at 31 December 2011		223.660.792,43	
Closing balance 1600 as at 31 December 2011		17.944.613,00	
			<b>241.605.405,43</b>
Balance OUT			1.191.362.391,43

## 7.2 ISUZU ABV 6850: CAR USE AS AN INCOME GENERATING PROJECT.

SITUATION	<p>In 2010 an Isuzu was bought by the Foundation with the aid of Wilde Ganzen.</p> <p>Within 5 years the Foundation aims to raise the original purchasing amount through its project funds and guest trips.</p>
RESULTS	<p>Per kilometer 2.500 K is charged. 1000 K hereof goes towards the above mentioned amortize over 5years, 800 K Diesel and 700K Maintenance, licenses, insurance etc.</p>
EVALUATION / EXPENSES	<p>In 2011 a total income of 73.424.250 K (€ 10.959) was raised, 20.805.500 K (€ 3.105) came out of the Guest trips and 52.618.750 K (€ 7.854) from the gcmf projects.</p> <p>In the year a total of 25.074.820 K (€ 3.743) was spend on maintenance etc. and 24.180.968 K (€ 3.609) on diesel.</p> <p>This brings the balance for 2011 to 24.168.462 K (€3.607). The total balance up to date is a negative – 55.534.208 that has yet to be raised. Meaning we are on the right track to complete the</p>

new purchasing amount by 2015.

Hereby a detail of the amount spend by the individual projects in 2011 on Car usage. *So in order to find out a projects real total of expenses it is necessary to add the below stated figure.*

CAR	3.057.500
GH	5.758.750
IBA	2.328.750
NCHE	1.083.750
OVC	5.535.000
OVH	10.792.500
TUB	97.500
VTC	12.806.250
YPOD	3.606.250
YPOS	4.507.500
YPP	3.045.000
	<hr/>
	<b>52.618.750</b>

### 7.3 BASIC EDUCATION, HIGHER EDUCATION AND THE ORPHANS AND VULNERABLE CHILDREN PROGRAM (OVC-PROGRAM)

#### SITUATION



The oldest program of GCMF pays for school fees and requirements for averagely 100 sponsored vulnerable pupils within the Mpongwe district, giving them a chance at an educated, prosperous future where there guardians are failing due to circumstances and difficulties.

The Foundation continued in 2011 the **optimization of the OVC-project**. A professional system now allows careful planning and monitoring, making it possible to reach full potential within its budget. The main beneficiaries herby are the pupils who have become individual identities with guidance. Also the Foundation worked hard to improve the relations with the different schools, we can now say to have developed a close working relationship with the schools OVC-coordinators and other officials. Since 2011 GCMF is also focusing on the results, hammering on their responsibilities towards each other and necessity to report every term to the Foundation. We hereby hope to improve their success rate in passing the exams.



On **05 March 2011 the first OVC Day** was organized. It was called a great success and one of its first within the entire District. The pupils learned from each other. Whilst playing together, there was a small competition and all students were in groups with various ages. The younger could look up to their elder vulnerable brothers and sisters, thereby seeing the future and possibilities. It meant a great deal in the group feeling of the 100 pupils. With a schoolbag full of school requirements and with a good **sense of identity and belonging** they went home satisfied.

## RESULTS



The Foundation ended 2011 supporting 95 children, spread in about 25 different schools. 59% is in Basic School, 32% High School and 9% Further education. 14% of the pupils are vulnerable (2 parents alive), 40% is single orphan and 44% is a double orphan.

Next to the principle support up to grade 12, 9 pupils are at college / professional training in Luanshya, Ndola, Kitwe and Lusaka. They've signed a bonding system, therefore promising to partially paying back the GCMF for its support.

## EVALUATION



Nine pupils wrote grade 7 exams, eight of them passed, some with very good results.

Of the ten pupils writing grade 9 exams, seven have passed, continuing their education into High School. Most of them have become boarders which improves their success rate of getting a grade 12 certificate considerably.

Seven pupils wrote their final exams in grade 12, results came out recently and they are yet to report. Same situation applies for the college diploma's.

## EXPENSES



In 2011, The Foundation sponsored in the end 95 pupils, for the total amount of K 93.116.950 (€ 13.898). K 52.744.980 (€ 7.872) was spend on pupils in Lower Basic, upper Basic and High Schools and K 40.372.000 (€ 5.312) in college or profession schools.

We hereby notice that the budget has been exceeded considerably due to the very high costs of the few students in further education whom nine take up almost half of the budget. For 2012 we have decided to put a hold on the further education since most of them graduate in 2011, we are looking to progress towards personal sponsorship where possible.

## 7.4 SUPPORT TOWARDS TWIKATANE COMMUNITY SUPPORT GROUP NAMPAMBA

SITUATION	In 2011 a workshop was given to 20 people living with HIV/Aids in Nampamba. The person conducting the workshop came to GCMF to explore some possibilities. After hearing him, we decided to assist the group in becoming a registered group in Zambia.
RESULTS	GCMF guided them through the process of becoming a registered group. A constitution was made by the group and the necessary forms were filled in, through guidance of the GCMF. The group was registered in 2011 as a Community Based Cooperation in Zambia.
EVALUATION	It took several meetings with the board of the group to accomplish the registration. From now on, the group can apply for grants towards several institutions and Community Development.
EXPENSES	No expenses have been made. As of know the gcmf Foundation is supporting them morally. Threw capacity building and facilitating possible ventures a more prosperous and concrete future becomes reality.

## 7.5 IBALA: OUR NATURAL FARMING PROJECT IN MPONGWE

SITUATION	<p>In 2011 a proposal on Natural farming was supplemented and approved. Ibala is the name of this new program.</p> <p>Since the announcement a certain amount of time was used to obtain information, to introduce the possibility within the existing community groups and for reflection.</p>
RESULTS	<p>The women of Nchembwe Twesheko installed a bore hole and Water pump at their Skills Training Center. They will be able to use the water for several purposes f.ex gardening.</p> <p>The Nchembwe Twesheko planted 1 hectare of groundnuts on the VTC plot with the help of Bulima Organics who will also act as purchasers afterwards.</p> <p>The Mukuyu Women Orphan Support group as well has planted one hectare of ground nuts. They are looking to scale up because they have a lot of potential nearby fields. In the dry season 2012 they are looking to clear a vast portion of land of one of its members. They</p>

## EVALUATION

also see a market at the Congolese borders next to Mpongwe's Bulima.

The Youths in Progress have planted 40 banana trees, it is a small beginning around their poultry house expressing their interest in the project. They are now however busy optimizing their Poultry activities which needs their full focus. They have shown interest in Fish farming and will submit a project proposal in good time. Gcmf has promised them a portion of the VTC land close to the Mpongwe stream for the same.

The Tubombeshe Gender Association submitted a proposal on Horticulture, fruit Growing. The gcmf committee is looking into its viability and approval.

After planting a wide range of possibilities within the identified community groups a majority has seized the opportunity by submitting a project proposal or starting up a branch in natural farming small scale.

In 2012 further deepening will take place as the groups will increasingly look for opportunities to install income generating activities with the help of this Natural farming program.

It is after the rainy season that general training will start. For the groups who have expressed specific interests a more tailored program can be offered.

## 7.6 CONSTRUCTION OF A SKILLS TRAINING CENTRE / COMMUNITY HALL FOR THE NCHEMBWE TWESHEKO WOMEN'S DEVELOPMENT ASSOCIATION.

### SITUATION



Nchembwe Twesheko was formed and is run by professional women in Mpongwe Central (Nurses, teachers, agriculturalists, civil servants and businesswomen) to assist with the development, education and skills of other, less fortunate women. To assist them, the GCMF decided in 2007 to construct a Skills Centre for their benefit and with support of "The night of the tip" organization in the Netherlands. In this Centre women and youths will be able to pick up skills and knowledge such as tailoring, reading and writing, accountability, agriculture and gardening, cookery, domestic economy, gender equity, HIV prevention, etc.

## RESULTS



In June the construction of the Community Hall was finally completed. The women held weekly meeting where they discussed future activities and fund raising. The women make small contributions themselves, they have planted 1hectare of groundnuts and they wrote project proposals for both Copperbelt Development Foundation and the ministry of Community Development.

On 4<sup>th</sup> of November there was a festive and successful opening ceremony. Most of the invited honorable guests / ministries came insuring the women a good start and prosperous future. There was dance, drama and singing and the surrounding was decorated in style. The guests went home after a good meal and with that the Women have advertised there Hall successfully.

The Women have come up with an activity plan for both tailoring and catering. The group was divided into two small groups. Also they are furnishing the hall little by little, to make it a nice environment ready for rental and the above mentioned activities.

## EVALUATION

The women are continuously meeting, capacity building, creating a solid, continuous group with shared responsibilities and goals.

With the Ibala groundnut project and a cheque of 13.000.000 by CDF they will be able to finish furnishing soon, starting up the first activities.

They now have entered a more practical and organized phase with 2 action plans and a fresh calendar and agenda for the meetings.

## EXPENSES

In 2011 The Foundation spend K 63.858.000 on this project. This equals € 9.531€ and brings the total since 2009 to K 136.971.917 (€ 20.444). This means the budget has been exceeded with 100%, this is partly due to the false contractors of Jaccaranda who ran away in 2009 with a downpayment. We are still looking to recuperate some of the money.

## 7.7 WRAPPING UP THE CONSTRUCTION AND FURNISHING OF THE GUESTHOUSE AND INTERNET CAFÉ AS AN INCOME GENERATING PROJECT. INVESTING, UPGRADING AND MAINTENANCE AS A CONTINUING PROCES.

### SITUATION

In 2008 the first rooms of the Guesthouse were occupied and the Internet café became operational. With this Guesthouse, GCMF now has solid grounds and a face in Mpongwe. This innovative project makes that students, volunteers and visitors now finally have a place to stay within the GCMF; that the Foundation has an office and meeting place and that Mpongwe now has access to the internet. Furthermore and it serves as an income generation project, a first step towards independence from donors abroad.

### RESULTS

The look, upgrading and maintenance of this venue is a continuous project. Hereby we highlight some of the works in 2011.

#### Guesthouse:

- Construction: The conference room was turned into 2 self-contained bedrooms. After a trial period, putting up first the conference room and turning it afterwards into a dormitory, the GCMF has seen the disinterest of the guests. There was a pending need for more self-contained rooms and therefore it was decided to remodel into 2 new rooms, bringing the Guesthouse extra revenues. The rooms were in use at the end of February 2011.
- Construction: The old bamboo fence was replaced with a more durable wire fence. Because of termites and the weather conditions the fence kept falling down.
- Construction: After receiving some private funding the decision was made to start with the **construction of a restaurant at the GCMF Guesthouse**. The construction is expected to be finished in January 2012. Expected is that the restaurant will be in use in March 2012.
- Construction: In order not to waste resources and materials the Insaka who was built on the same place where the restaurant came has been put up at the back. This will be a place of quietness and rest after the restaurant opens the doors.
- Construction: Because of heavy rains in the rain season, decision was made to put up a pathway at the back towards the store room and the new insaka.
- Maintenance: To make the place look better, flowers and trees were put on several places surrounding the premises.
- Upgrade: In 2011 the rooms were provided with a table and

chairs in order to improve the comfort towards the guests.

- Upgrade: In the dining room a television was installed in 2011, as a service towards the guests.

#### Internetcafé:

- Upgrade: In 2011 a photocopy machine Laminating machine and a Scanner were bought. On the one hand to provide an extra service towards the clients, on the other hand to boost the income of the Internetcafé.

#### EVALUATION



Since September 2009 The Guesthouse and internet café exists as a separate unit, meaning that the revenues and costs are no longer part of the GCMF Accountability. The Foundation however still invests towards the upgrading of its mother project

The results for 2010 confirm the tendency set in 2009 with an average occupancy rate between 85% and 95%. In the dry season the guesthouse knows long periods of 100% occupancy as opposed to the rainy season when people are investing in their maize fields.

In 2011 the confirmation is complete. The Guesthouse has already a vast range of regular guests and the average occupancy rate stays more or less 90 %.

Important remark hereby is that the construction of the 2 new rooms didn't influenced the occupancy rate. Conclusion hereby is that, even with 2 new rooms, the Guesthouse keeps on having the same occupancy and therefore increased the number of guests.

In the internet café, the service to the clients improved through the purchase of especially the photocopy machine. Moreover, the turnover increased significantly.

#### EXPENSES

- The Foundation allocated another 15.588.700 K (€ 2.327) towards the completion of 2 self-contained rooms. Bringing the total with 2010 up to 22.03.200 (€ 3.289).
- On the wire fence GCMF spend a total amount of 16.635.000 K, which equals € 2.483.
- And finally for the Construction of a bar/restaurant gcmf assisted with 66.672.900 (€ 9.951) in 2011.



## 7.8 SWITTI VILLAGE AND THE MUKUYU WOMEN ORPHAN SUPPORT GROUP.

### SITUATION

In 2009 a Hammer Mill and electricity was handed to the Women of Switti Village. From this day forward the women are able to generate some income to support all the orphans living in their village.

An agreement was made that the women would receive 3 years of support purchasing seeds and fertilizer for maize crops by the group Mpongwe-Landstede. Harvest season 2009-2010 was considered to be the first, so in 2011-2012, the women have to be able to be self-reliant.

In 2011 the Women entered the Ibala project. They planted one hectare of groundnuts. They are looking into the future and one of its members owns a very big portion of land. This is to be cleared after which she agreed to lend the women the land facilitating numerous natural farming possibilities at large scale.

### RESULTS



The Women met on a very regular basis in 2011 guided by gcmf. We hereby succeeded in mapping the supported OVCs, 40 in total. The women are increasingly showing more transparency. From the profits out of the hammer mill and fields each woman gets an equal share, besides that the money is reserved for the OVCs and also put unto a bank account for future investments or challenges.

There are much more OVCs identified within the area and other groups than the Mukuyu Women have arisen around Switti Village. We have stated the challenge for the Women to increase their capacity through its income generating projects, creating an opportunity for their community.

### EVALUATION

Within this year the women have shown transparency, professionalism, independency and most especially the willingness to advance. They are committed and interested and are looking forward to make the most out of the Ibala – natural farming – project in order to generate more and more income.

On 25<sup>th</sup> of January 2012 the Women lost their secretary, Vainess Nkobi, a very committed member and a great loss. The Women organized and paid for the funeral, a nice gesture and we will miss our little Vanessa.

### EXPENSES

See IBALA Project

## 7.9 CONSTRUCTION AND START-UP OF A POULTRY HOUSE FOR THE YOUTH GROUP 'YOUTH IN PROGRESS' IN THE MPONGWE CENTER.

### SITUATION



In the year 2009 a huge exchange visit took place. Youths of Mpongwe visited the Netherlands and Youths from the Netherland group Landstede came to Zambia. This was the beginning of a fruitful cooperation between the two and the Zambian 'Youth In Progress' was born. The youth group submitted the above mentioned project. The Poultry project shall serve as an income generating project. Once generating income it will be spend on their further education and part will go towards supporting some children of the OVC-program of the Foundation.

### RESULTS

Accompanied by the Foundation they thought about priorities, planning, constitution, and continuity of their group. In 2011 the poultry house was operational. The youths developed a working schedule, a policy, a marketing strategy and financial records.

### EVALUATION



This thinking process is proven to be very instructive for the skills of the individual members and their future. The youths are involved in every stage of organizing a business, as well as in setting up a good organizational structure. They generated income although they encountered some difficulties.

### EXPENSES

In 2011 the Foundation spend another 20.839.900 K (€ 3.110) on the Youths in progress, mainly helping them with the set up of their chicken house. We helped them buying materials for the start-up, improvements, investments and provided loans towards buying feeds. From the money also a trip was made to Livingstone as a reward for their voluntary hard work, costing GCMF about 11.000.000 (€ 1.645). This brings the total cost since 2010 up to 50.000.000 K (€ 7.463).

## 7.10 VOLUNTEERING, INTERNSHIPS AND RESEARCH PROJECTS

### SITUATION

The Foundation GCMF and its mother organization GKMT in The Netherlands has in this aspect a close working relationship with different faculties of Dutch Universities, Dare2Go (Jongeren en Missie), ROC Landstede and the Zambian DDCC.

## RESULTS



## EVALUATION

## EXPENSES

The social economical situation in The District has been translated into a number of problem areas. These problem areas are a starting point for the internships and graduation assignments of these mostly Dutch Students. These areas are as followed: Health, Education, Water and Sanitation, Agriculture, Gender, Infrastructure, Social Work and Development, forestry and council.

Results of the visitors in 2011:

- Students physiotherapy: Loes Grim and Laura Beckers: Community Based Rehabilitation Center Ndola .
- Social work: Jennifer Peeters and Aniek Vergouts: Community Based Rehabilitation Center Ndola.
- Biometrics: Student Martijn Koevoets research on the possibilities and applications of a portable ultra sound devise of Classic Images. When developed proper a diagnostics will be possible for pregnant women living in remote rural areas.
- Doctor: Anna Stiekema: Mpongwe Mission Hospital
- Teacher students: Jordi Jaeqx, Remco Schoonbrood, Rick Sierdal and Marissa Reubsaet. They did their internship in Kabumba and Chipese school.

All of these students brought a feedback of their internship or research to the steering committee, the internship place and the District Development Coordinating Committee. This happens by the handing over of their internship report or their research report and the presentation of those.

A total of 30.487.740 K (€ 4.550) was spend in 2011. Mostly the money is used for the construction of a new Classroomblock at Chipese (6.525.000K or € 974) and the donation of School Books at Kabumba Basic (9.590.400 or € 1431).

Money here fore was raised through a benefit organized by the teacher students Jordi, Remco, Rick and Marissa. Other expenses are supervision, approvals, allowances and educative materials.

## 8 START-UP A TECHNICAL SCHOOL (GEORGE KORSTEN VOCATIONAL TRAINING CENTRE) IN MPONGWE

### 8.1 PREPARATIONS

#### 8.1.1 SITUATION

In Mpongwe District a trend was noticed, namely, an increasing number of pupils leaves Mpongwe in their search for future education. Youths that stay behind don't have the finances or possibilities to have professional training and stays home unemployed.

The Foundation wants to set up a Vocational Training School in Mpongwe, offering several, by TEVETA



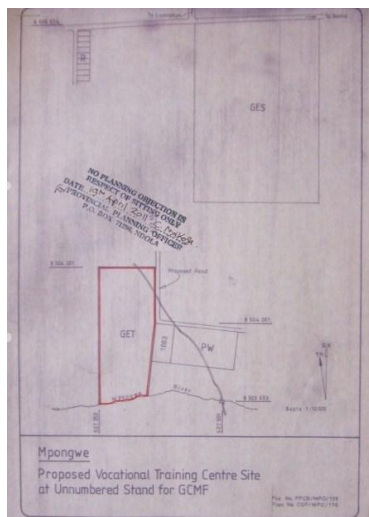
accredited, courses with the duration starting from some months up to two years. A VTC in Mongwe means retention of knowledge and youths and therefore development of the entire region. TEVETA is responsible for certifying and quality criteria. It also supplies materials for courses and total curriculum.

After several conversations between GCMF, the Council in Mpongwe, the DDCC and the partner organization GKMT in the Netherlands there was decided to conduct a feasibility study and a market survey in 2010.

Two students of The Faculty International Business and Languages of Hogeschool Zuyd made a Business Plan, surveying youths and stake holders such as The Ministry of Education, Health, Works and Supply, Council, local business etc. The study has shown the great necessity of this professional training within the Mpongwe District.

An application was submitted with "Wilde Ganzen" en "NCDO" of The Netherlands to complement own fundraising. These applications were approved in November 2010. The Foundation started active fundraising and a plot of 10 hectares was requested in the council area of Mpongwe at the planning office in Ndola.

#### 8.1.2 LOCATION



First of all the location where the VTC had to come was to be identified. We identified the place in cooperation with the Planning Office in Ndola and the Council in Mpongwe. The location GCMF was given is about 1,5 km from the centre of the town, next to Mpongwe River. The plot is about 10 hectares.

The planning Office came to Mpongwe to put the boundaries of the plot. After putting these up, negotiations started with local people concerning the land.

After two months we reached an agreement upon these items. All parties felt well after these negotiations.

### 8.1.3 PLANS

4 students architecture from Hogeschoool Zuyd made 2 proposals of how the VTC could look like. They presented their plans to the board and members of the steering committee of GCMF. The design had to follow the 'open source criteria', based upon durability and sustainability.

GCMF, in consultation with the board in The Netherlands, chose the design in a circle, referring to the traditional way of living in Zambia.

These plans were taken into consideration and had to be adjusted according to local possibilities, standards and circumstances. Experts were involved in this process.

It took about three months to be sure the plans were ready to put into practice. Especially weather circumstances and the appearance of borers and termites had to be taken into consideration. Also the available materials were a point of discussion.

## 8.2 MATERIALS

Following the 'open source criteria' materials had to come, as much as possible, within a radius of 200 km and had to be natural.

Because of the presence of termites we had to bring in cement for the foundation and a small upper structure from Ndola, a town situated on about 100 km from Mpongwe central.

Other materials, such as sand, crushed stones and gravel came from the village itself or the neighbouring villages. Timber for the upper structure was found in Machiya, a chiefdom close to Kafue river, about 35 km from Mpongwe central.

The timber that is used for the construction is tropical hardwood (Kayimbi), with a high resistance to termites and borers. The timber is hard, durable and extremely strong. Hence the measurements of the construction were adjusted.

The construction is put together with bouts and nuts. This will make it possible, in time, to change parts of the construction easily.

Most of the roofs of the VTC will be thatched in local grass of good quality.

## 8.3 PURCHASING OF A TRUCK



The VTC is a school with, when fully completed, buildings. Considering the fact that a lot of materials such as sand, crushed stones, gravel (laterite), timber, etc. have to be transported to the plot, the steering committee investigated if the purchase of a truck would be opportune.

After checking several options, the conclusion was that purchasing a truck turned out to be positive, financially as well as organization wise.

Research started and a truck (Mitsubishi Canter) was bought in October 2011.

Since that moment, the truck was driving almost every day to supply materials to the construction site. After these couple of months, it can already been said that it has been a good decision, both logistically and financially.

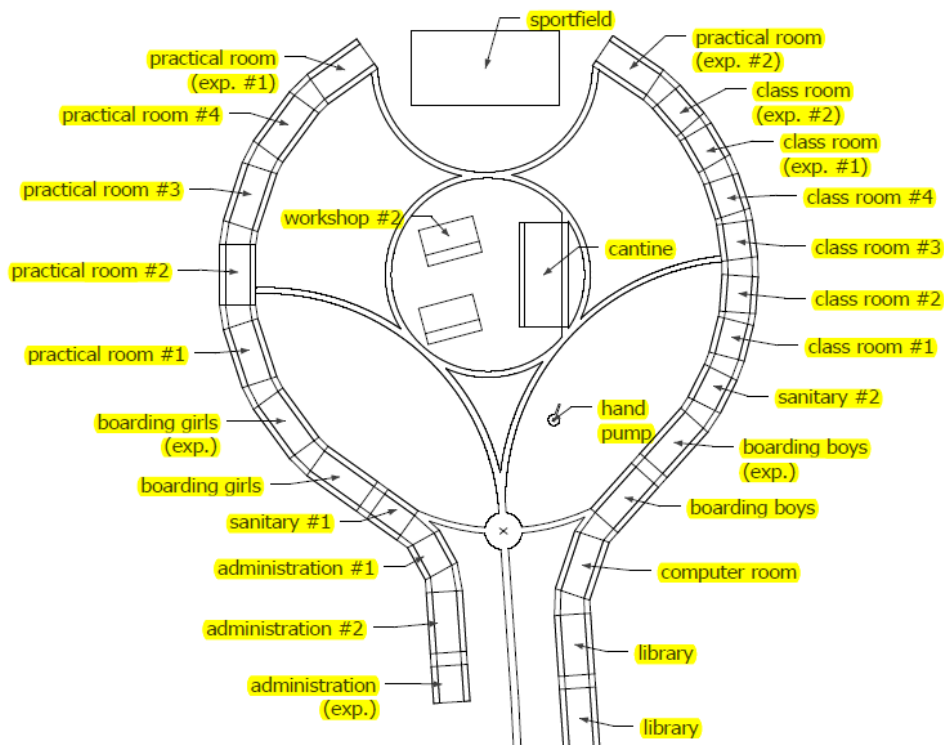
## 8.4 CONSTRUCTION

The construction started with measuring out the plot properly and put up the places of the buildings. Because of the absence of electronically material, this had to be done by simple math, and measured with a 100 meter tapeline.

When measurements were put out, the construction works started. We made the choice first to put up the 2 central buildings. Doing so, we could arrange a store room, a carpentry workshop and a metal fabrication workshop in order to prepare everything that is needed to construct.

The situation as it is on the 31st of December 2011 is as follows:

- 2 central buildings have been constructed and plastered.
- foundations and lower upper structure of 4 classrooms were finished
- 2 classrooms have an upper structure in timber
- Foundation up to slab level were finished for 3 practical rooms
- Foundation of sanitary





## 8.5 COMMUNITY INVOLVEMENT

In order to involve the communities surrounding the VTC, we decided to look for employees in the surrounding villages first.

The result is that almost all the helpers and some bricklayers live nearby the school and earn an income through the construction of the VTC. We notice that in doing so, the involvement is substantial and the construction of the VTC becomes a win-win situation, People have a salary through the VTC and the VTC is supported, as a school by the same communities.

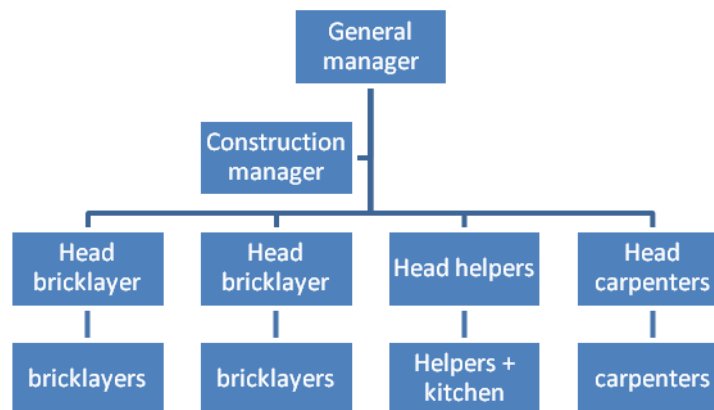
## 8.6 PEOPLE MANAGEMENT

After negotiations we identified a head bricklayer who had to be in charge of the construction work. We started to put up a organizational frame in which the employers at the plot could work in.

Unfortunately, the steering committee lost faith in the same man because of different reasons.

Knowledge of constructions, leadership and people management in particular. After consideration, the steering committee of GCMF decided to dismiss the headbricklayer and to put up a new structure.

This is how it looks like:



## 8.7 CAPACITY BUILDING AND YOUTH INVOLVEMENT

At the end of 2011, GCMF organized a building project. This project included an exchange of knowledge. e.g.: The roof construction of the different buildings of the VTC are not the common way of construction known in Mpongwe District. It was designed by Belgian and Dutch experts in order to have a strong construction, who's durable and according to the Open Source Criteria.

Through cooperation during the building project, local carpenters learned how to construct the same. The result was that after the departure of the 20 Belgians, the carpenters were perfectly capable of putting up the structure as designed.



Because we, as GCMF, built a school for youths, we wanted to involve youths also in construction of the VTC. 2 of the Belgians who were part of the building project are professional welders. They learned three youths (of which 2 of the youth group of Mpongwe: Youth In Progress (YIP)) how to weld and work with metal. These youths are now capable of basic metal fabrication and they can make the items necessary to put up the construction.



## 8.8 DURABILITY

Every step taken in the process to put up this VTC is well considered in order to make it durable and sustainable. The choices made (e.g. the kind of timber for the roof construction, the origin of the materials, up to the design itself) are based upon the Open Source Criteria.

## 8.9 FINANCIALLY

IN		
GKMT	22/09/2011	76.500.000
NCDO/Wilde Ganzen	14/09/2011	65.182.300
GKMT	14/10/2011	117.852.000
NCDO/Wilde Ganzen	28/11/2011	132.679.200
NCDO/Wilde Ganzen	27/12/2011	130.590.000
		<b>522.803.500</b>

OUT		
PLOT acquisition of land		14.380.000
TRUCK		99.594.000
EQUIPMENT and expenses on usage of the same		69.526.323
MATERIALS – Building materials and hardware to be used for construction		228.335.983
LABOUR		39.158.400
OVH		5.635.877
BUILDING CAMP		<b>22.774.080</b>
		<b>479.404.663</b>

- PLOT: 7.000.000K (€ 1.045) was given to council for the purchase of the land. The other money was mainly spend on the Planning Office in Ndola. The planning officer comes to measure the land and put official beacons, afterwards we receive a plot number from The Ministry of Lands.
- TRUCK: On 19<sup>th</sup> of October a second hand Canter of value 85.000.000K (€ 12.687) was bought. An investment making the supply of building materials constant, faster, cheaper and more efficient. 4.116.000K was spend (€ 615) on Maintenance and 7.998.000K (€ 1.194) on diesel.
- EQUIPMENT, LT investments: 2 Generators were bought HGW Honda for respectably 11.875.000K (€ 1.772) and 8.341.000 (€ 1.245). Also a borehole and water pump was installed 33.860.923K (€ 5.054) at the plot and further more necessary utensils and equipment was bought.
- BUILDING MATs: 5.956.000K (€ 889) was spend on burned bricks, 41.900.750K (€ 6.254) on cement, 26.000.000K (€ 3.880) on concrete blocks, 7.299.000K (€ 1.089) on crushed stones, 32.430.000 (€ 4.827) on gravel, 27.940.000K (€ 4.170) on sand, 32.298.000 (€ 4.821) on timber

and furthermore 54.602.233K (€ 8.150) was spend on various hardware such as door- and window frames, conforse- and brickforse wire, deformed bars, nuts, screws and other requirements.

- **LABOUR:** A total of 39.158.400K (€ 5.845) was used to pay the salaries of the workmen.
- **OVERHEAD:** This cost post includes various matters such as allowances, talktime, pontoon crossing and other costs. This was good for a total of 5.635.877K (€ 841) in 2011.
- **BUILDING CAMP:** 12.000.000K (€ 1.791) was budgeted for food when 25 Flemish volunteers came to assist for 16days, from this amount they had breakfast, lunch and dinner at 30.000K per person. Note: For lunch a total of 70 workmen was fed. For their accommodation the gcmf paid 7.680.000K (€ 1.146) to the Guesthouse.



## **9 TRANSPARANCY AND ACCOUNTABILITY OF THE FOUNDATION IN MPONGWE**

In order to maintain a close working relationship with the mother organization in The Netherlands “Geef de kinderen van Mpongwe een toekomst” and its donors, the Foundation has to monitor its transparency and accountability.

### **9.1 TWO ASSIGNMENTS WERE DESIGNED TO ADDRESS THE ABOVE STATED**

#### **9.1.1 AUDITING THE EXISTING ADMINISTRATIVE STRUCTURE AND IMPLEMENTING CHANGES WHEN NECESSARY AND REQUESTED.**

The Accountancy and project administration is currently a task of one of the Belgian volunteers. They use a program designed by Simon Coenen in 2008. Monthly reports on revenues and expenditures are sent to the mother organization in the Netherlands. This communication enables both parties to carefully monitor budget allocation and threats; it is furthermore 100% transparent.

#### **9.1.2 THE DETERMINATION OF CRITICAL SUCCESS FACTORS TO MEASURE THE VALUE GCMF ADDS TO THE DISTRICT.**

These measures were stated in the report “Mpongwe District Development Poverty reduction Strategy 2005 – 2007”.

These critical factors are measurable and play a key role in the realization and success of projects. When monitoring its projects GCMF has to look for these critical factors and use them when reporting gathered information.

Some of the main factors for GCMF to be measured are:

- Responsibilities and roles of stakeholders
- Training of personnel / education
- Development of infrastructure
- Access to and the use of means
- Corporate governance



## 10 RISK MANAGEMENT AND THE PROJECT CYCLE

### 10.1 FINANCIAL RISKS

The Foundation has been totally dependent on donations from The Netherlands, and from 2009 also Belgium. None of these donations are said to be permanent and structural, so careful planning and expenditure is required.

The funding can start when project proposals are solid and detailed. A great challenge for the Foundation lays in the finding of structural partners to ensure overhead costs and permanent programs such as the Orphans and Vulnerable Children Support program can continue.

The Board in The Netherlands is currently responsible for the fundraising, here and there they get support from initiatives taken by other volunteers. Necessary to say is that expansion of committed people would mean a great plus; now the fundraising is basically in the hands of two people.

We can reduce the financial risks by guarding the policy that a project can only commence when sufficient funds are raised (See project Cycle).

The recent realization of the income generating Guesthouse and internet café is a first step towards the reducing of financial independence. Investments and changes are continuing in order to make this venture sustainable and moreover more profitable.

### 10.2 EXCLUDING FRAUD / GUARDING REPUTATION

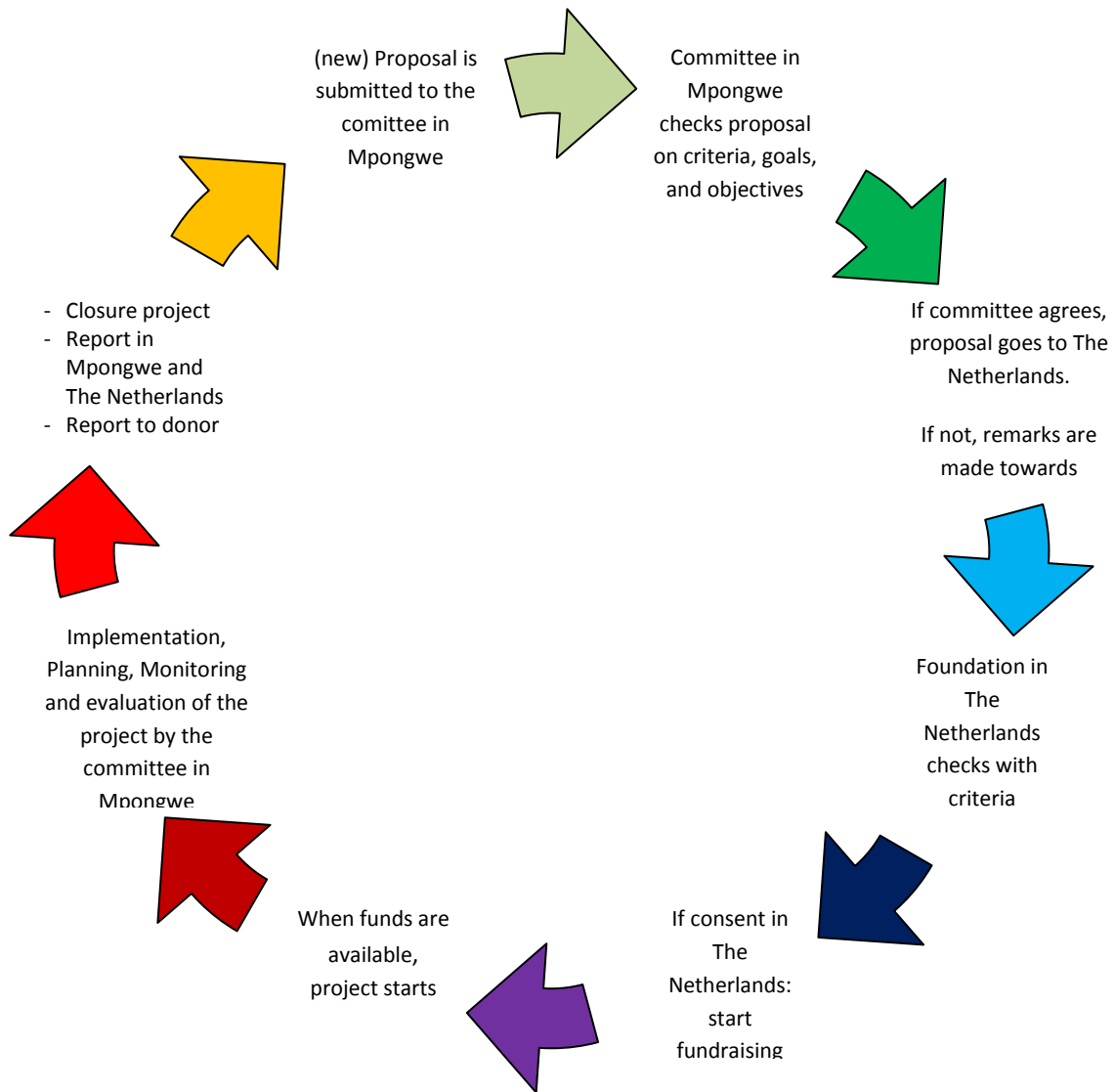
GCMF reduces the risk for fraud by maintaining close contact between the organization in The Netherlands and in Zambia. Two Belgian volunteers also assist the executive committee in Mpongwe with the financial management and project management.

Guarding this transparency is important to ensure the donors that their money is effectively spend on the proposed project

- Financial and project administration is conducted following a professional developed manual.
- Monthly bank statements, account lists and project management lists are send to The Netherlands for their inspection and approval.
- The Chairperson from the Netherlands comes to check on progress on a regular base.
- An applicant has to hand in a project proposal to the executive committee, accompanied by a Bill of Quantities and budget.
- Every application has to go through a certain process/cycle in Mpongwe and The Netherlands. See as depicted below.
- The Foundation in Mpongwe buys all the materials personally and takes them directly to the respective sites of the projects.
- Every year an accountant from The Netherlands audits the Year statements.



## 10.3 PROJECT CYCLE



## 11 FUTURE

The future has three main pillars in store for GCMF and The District. In 2011 we will invest in:

- Consolidation of current projects
- the construction of a Vocational Training Center
- to stimulate community based groups to register, to raise funds and start up 'income generating ventures'

After working very hard to consolidate the position of "Give The Children of Mpongwe a Future" and developing close working relationships with Mpongwe District Council, The District Commissioner (DC) and the District Development Coordinating Committee (DDCC), GCMF is now ready for depth and sustainability.

### CONSOLIDATION OF CURRENT PROJECTS

The Foundation shall invest in **capacity building of its current supported groups and projects**. The women of Nchembwe Tweshoko and Switti Village, The Youths of Youth in Progress and the people of the Tubombeshe Gender Association will be helped, guided, advised and supported until they are fundamentally ready to work as independent, strong groups managing a durable income generating project. The Orphans and vulnerable Children Support Program remains core business and is being improved every year, striving towards transparency and maximal support.

In 2011, The Guesthouse will be expanded with 2 rooms and the construction of a restaurant will start. All this to ensure that the GCMF Guesthouse can provide income for the foundation and her projects.

### CONSTRUCTION OF A VOCATIONAL TRAINING CENTRE



New on the agenda is the biggest project GCMF has ever assumed. The **construction of a Vocational Training Center**, the first of its kind in this big district. This project is in line with the core business of The Foundation, assisting the children of Mpongwe in their education. With this project the youth of Mpongwe will have a choice to stay in their own district seeking higher professional education. This will reduce the exodus of educated youths, less fortunate youths will be able to continue education and entrepreneurship will be stimulated. Making this project a big partner in the economical development of the Mpongwe District.

The feasibility study was positive, the plot is ready to be allocated, the funds and resources are growing and a design of the building is being made, so in 2011 the GCMF will be ready to start this labor intensive task.

## STIMULATE COMMUNITY BASED GROUPS TO DEVELOP

GCMF shall invest in community based groups in order to make them stronger, self-sustainable and independent. The foundation wants to accomplish this through:

- guiding them in the registration process
- helping them making a constitution
- show them ways to write project proposals
- Supporting them in doing their own fundraising



## 12 WITH THANKS TO

The GCMF Committee is looking back at 2011 with a sense of gratification, satisfaction and pride. It was a challenging but consolidating year whereby GCMF has once again proved its worth. After what we would call the traditional construction projects, The Foundation now has developed a firm base of professionalism, experience, goodwill and programs and can continue working towards its fundamental principles based on durability, sustainability, self-reliance and ownership.

We would like to thank Simon Monbalieu and Sofie De baere, who strengthened the Foundation for two years with creativity and perseverance.

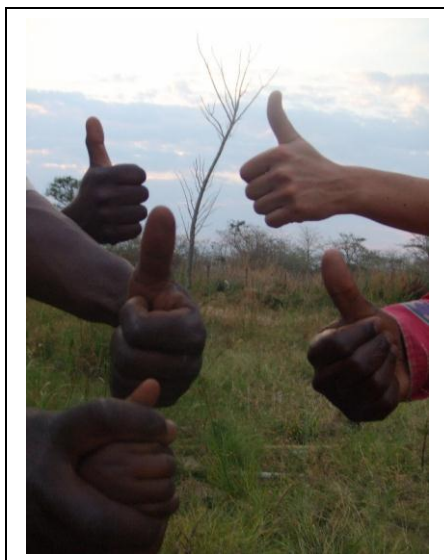
A special thanks goes to all the committee members in Zambia for their time and expertise. We specially can't forget our generous donors in the Netherlands, partners in our future making our ideas possible. Thereby thanking Wilde Ganzen, Vastenactie, Landstede, NCDO, Cordaid and several private initiatives, also in Belgium.

The "Give The Children of Mpongwe a Future" Foundation and its partner organization "Geef de Kinderen van Mongwe een toekomst" in The Netherlands are one.

Without the everlasting, endless support of its founder Ton Korsten-Korenromp, the organizations wouldn't be where they are today. A fruitful mixture of committed volunteers with a long term view to make Mpongwe blossom.

We would therefore like to express our gratitude to Mrs Ton Korenromp, Mr. Wim Mensink and Mr. George Korsten. We can't forget how much time and effort they put in this Foundation and in the development of Mpongwe.

We would also like to thank Tine Buysens and Tijs Naert who started their work in July 2010 and already are doing a great and commendable job within especially in the construction of the VTC, the Youthgroup, Nchembwe Twesheko, the OVC-Program. We want to thank them for their tireless commitment and expertise they offer to the foundation.



Mr. A. Kalima : Chairperson GCMF

MRS. T. Korsten-Korenromp: Chairperson and founder GKMT